

Quick Start Guide

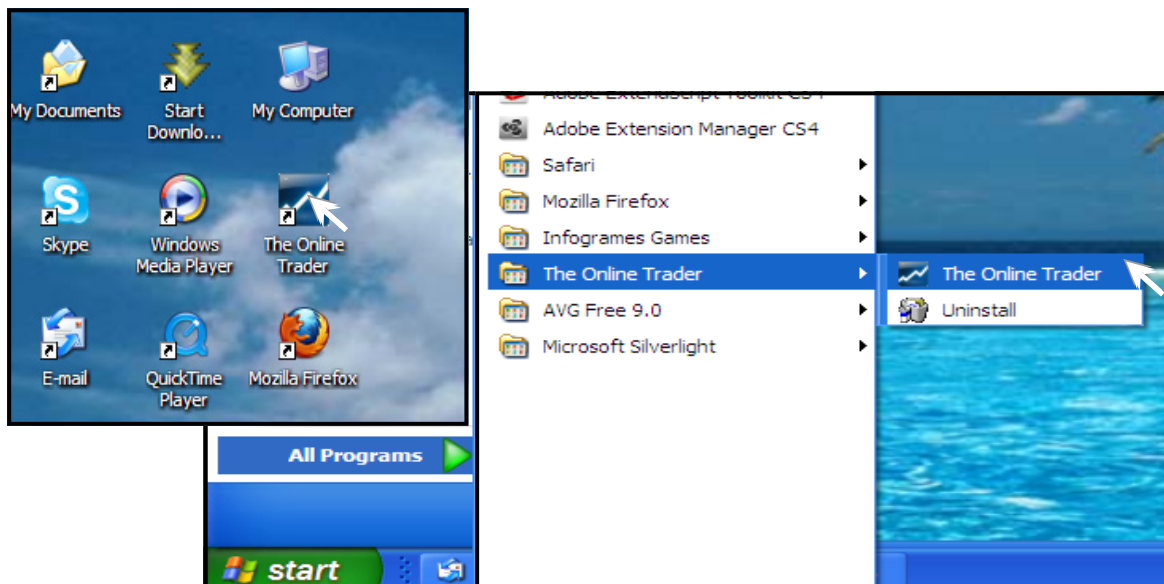
This guide will bring you the main features and capabilities of the trial version UME X Trader. To obtain more detailed information on each of the available Windows, you can use the F1 (Help), or click the right mouse button on the area of interest and select Help. The information contained in the Help files are upgraded to new versions, while the Quick start guides are updated less frequently. If you have more questions, in the main menu, select Help.

A guide is also available for the full licensed version that gives you access to live market trading.

1. Getting Started

Installation - The program must be installed on your computer according to specification found on www.theonlinetrader.com/eng/installation.htm

To start the application, double click the icon on your desktop or press the "Start" button and select All Programs / The Online Trader / The Online Trader .



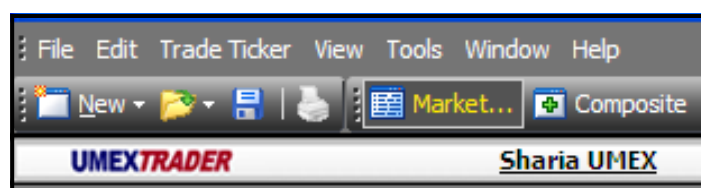
Log-in Window

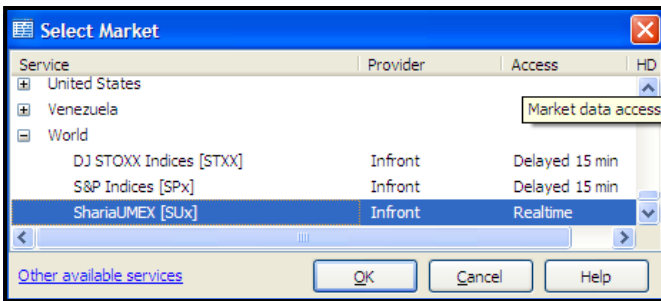
When you first start the application, there is a window to sign in with user information. Enter the Provider ID (386), user name and password that have been emailed to you, then press OK. This is the information required to run application and access price data from the markets to which you are subscribed (transactions require a separate log-in).

Create Workspace

Having logged in you will need to create your workspace. Close the Mixed News and LSE windows but leave the Trade Ticker window open and then click on the Market button at the top of the screen.

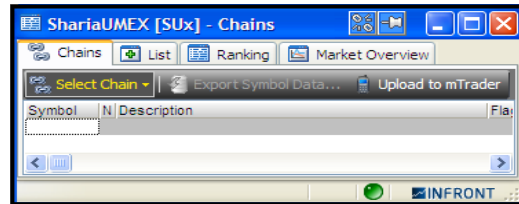
A new window will open Select Market.



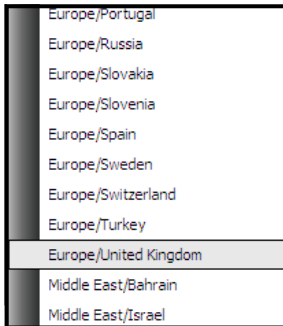


A new window will open Select Market.

Scroll down to the bottom of the options, click on World, select ShariaUMEX and then press OK.

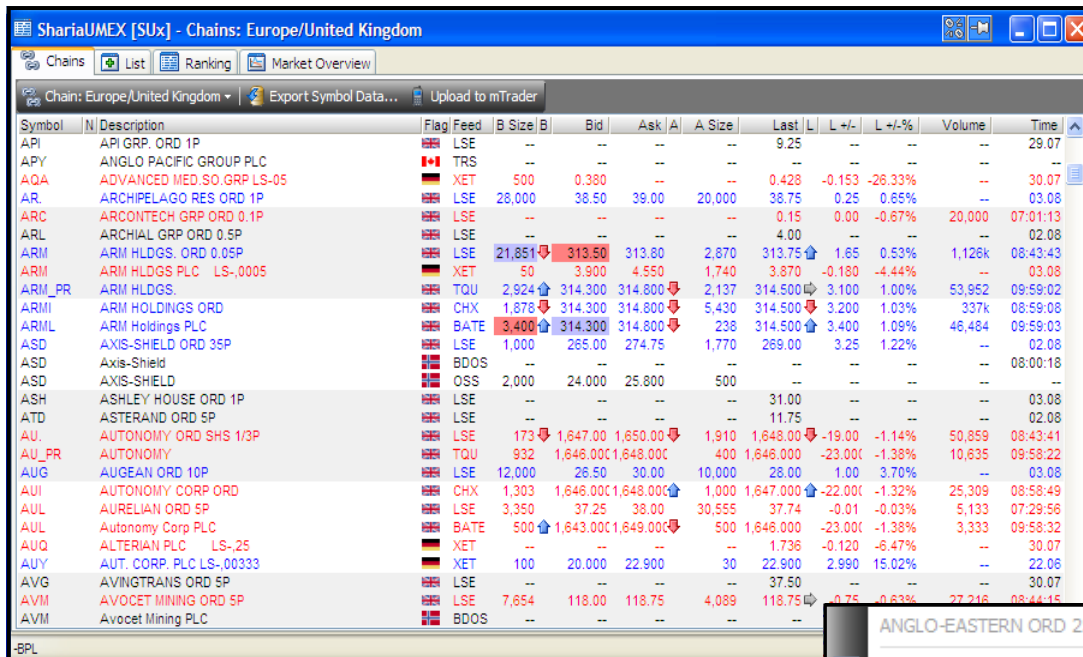


The ShariaUMEX list of markets will now be available in the new window by clicking on the Select Chain button.



Because this is a trial version, the live market data is only accessible on the LSE and other European markets. To access the live market feeds scroll down to Europe and select a market such as United Kingdom.

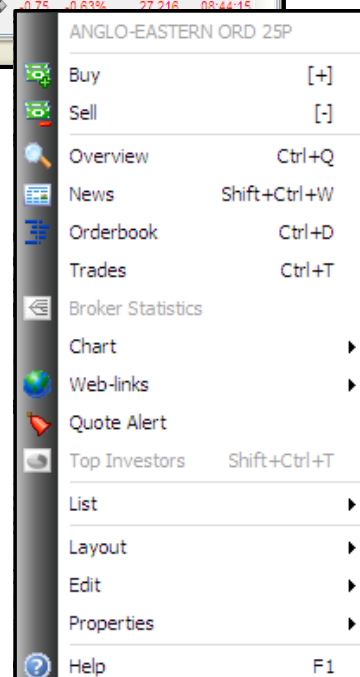
A new window will now open giving you access to live price feeds on all Sharia compliant companies listed on the selected exchange as well as additional price feeds from MTFs such as Chi-x or Turquoise. You will also note that the Trade Ticker now shows trades as they are executed on the market.



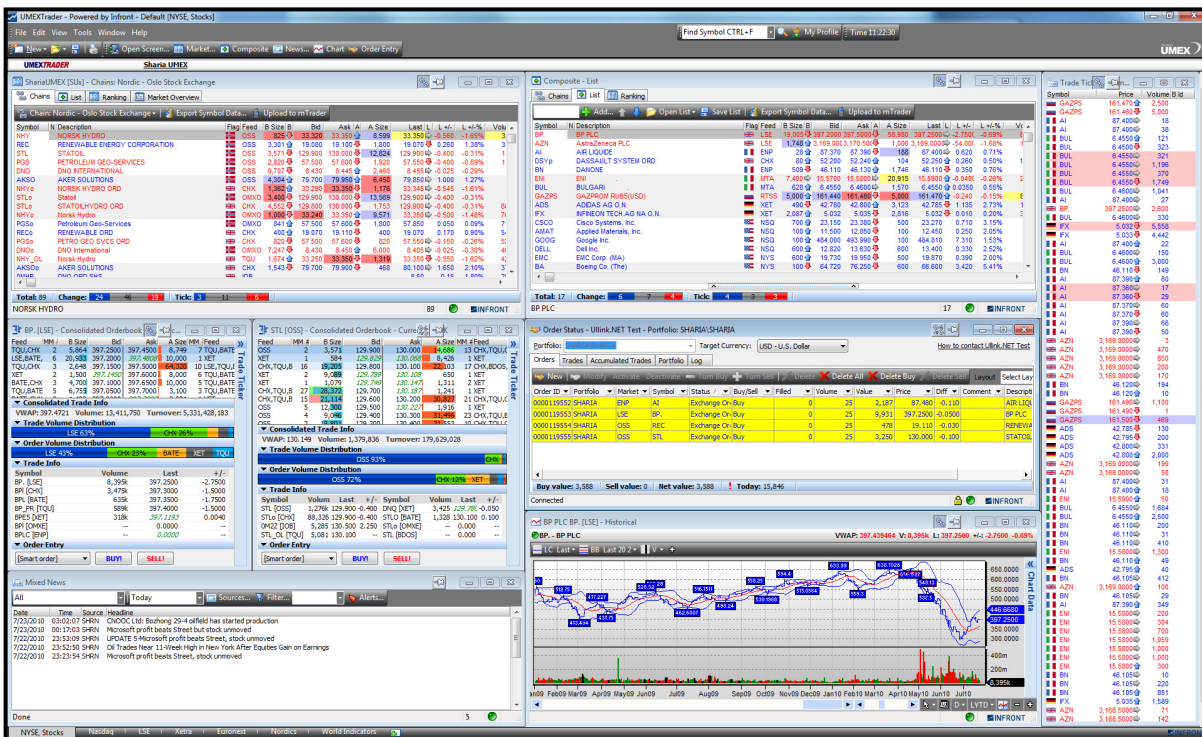
2. Workspace and Folders

A workspace contains several windows with market data and functionality tailored to suit your preferences. A workspace, like a screen can contain several “desktops”. You may add other windows containing market data, news, charts, etc...at any time. Simply right click on a stock you wish to follow or research and select a function from the toolbar menu.

Users can customize window sizes, fonts, colours and themes as well. Workspaces can be saved for later use and one can be chosen as default. Notice that with each window you open, the need for bandwidth of your Internet connection also increases, particularly with intraday charting.



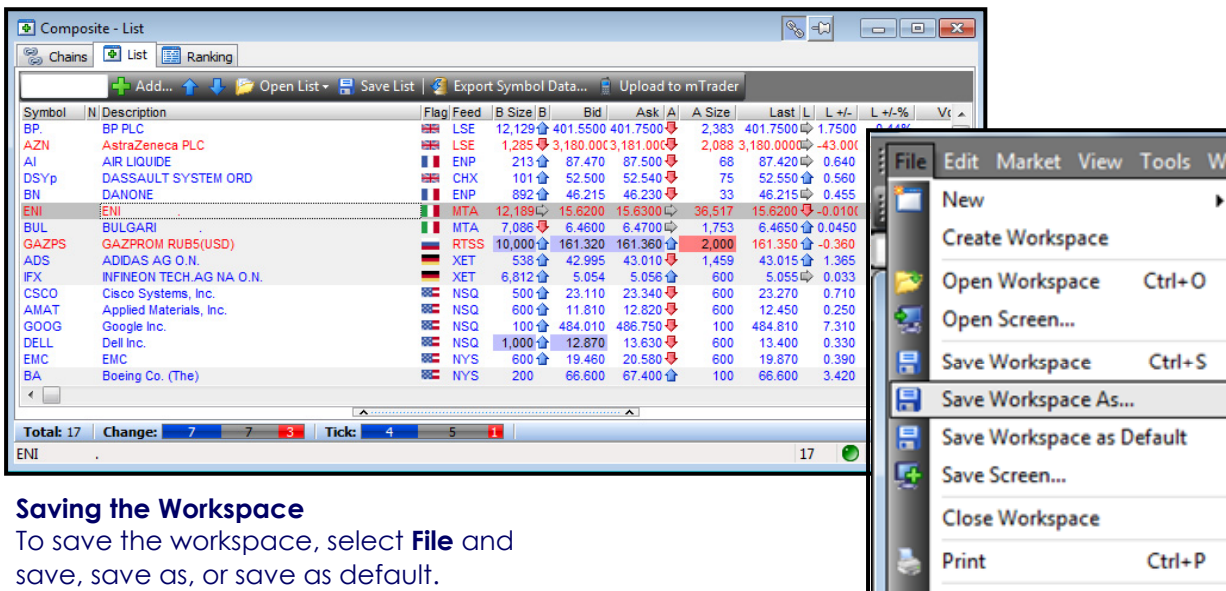
Users can customize window sizes, fonts, colours and themes as well. Workspaces can be saved for later use and one can be chosen as default. Notice that with each window you open, the need for bandwidth of your Internet connection also increases, particularly with intraday charting.



3. Composite Windows

The Composite window works in the same way as the Market Window. The main difference however is that the Composite Window makes it possible to define symbols from different markets or asset classes to which you have access. For the trial period, you will only be able to create Composite windows from the stocks listed on European markets. You can open unlimited number of Composite windows.

Select **File | New | Composite** on the main menu or just click the Composite tool bar icon. To add symbols type the name in the blank field and press enter. If you do not know the instrument code, click on the **Add** button. To search for a symbol description, just click on the **Add** button to open a search module.



Saving the Workspace

To save the workspace, select **File** and save, save as default, or save as default.

4. Trading

UMEX Trader includes advanced trading functionality for active institutional- and private investors. Users can enter, amend, and/or delete submitted orders instantaneously on one or several exchanges. The entire trading process can be accessed from your screen allowing you to monitor and trade multiple markets simultaneously.

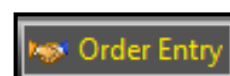
UMEX Trader supports trading from the keyboard or by the mouse. To place an order, simply press + to buy and - to sell. Read more about keyboard shortcuts in the Help files.

The following windows are available for Trading:

- Order Status Window - Providing overview of your Portfolio(s), Orders & Trades
- Order Entry Window - Standard or advanced view for entering orders
- Click Trading Window - Enables you to place an order in just one click
- Basket Trading Window - Enables you to define baskets and send them to the market

How to access

Select **New | Order Entry** or simply click on the Order Entry tool bar icon



When the login window appears you must type the login and password provided by your broker. Note: This is not the same login as the program log in.

The Order Status Window is the main window for trading where you will have the full overview of all your orders, trades and the portfolios to which you have access.

This window has five folders; **Order, Trades, Accumulated Trades, Portfolio** and **Log** tabs.



Order Status - Umlink.NET Test - Portfolio: SHARIA\SHARIA

Portfolio: SHARIA\SHARIA Target Currency: USD - U.S. Dollar

Orders Trades Accumulated Trades Portfolio Log

New Modify Activate Deactivate Turn Buy Turn Sell Delete Delete All Delete Buy Delete Sell Layout Select Layout

Order ID	Portfolio	Market	Symbol	Status	Buy/Sell	Filled	Volume	Value	Price	Diff	Comment	Description	Currency
0000119555	SHARIA	OSS	STL	Exchange On	Buy		0	25	3,250	130.000	-0.600	STATOIL	NOK
0000119554	SHARIA	OSS	REC	Exchange On	Buy		0	25	478	19.110	-0.040	RENEWABLE ENERG	NOK
0000119553	SHARIA	LSE	BP.	Exchange On	Buy		0	25	9,931	397.2500	3.5500	BP PLC	GBX
0000119552	SHARIA	ENP	AI	Exchange On	Buy		0	25	2,187	87.480	0.080	AIR LIQUIDE	EUR

Buy value: 3,582 Sell value: 0 Net value: 3,582 Today: 15,846

Connected INFRONT

Orders

The orders tab shows the status of all your orders. An order can be either active or inactive; an inactive order is not sent to the marketplace, while an active order is sent to the marketplace. As soon as the order is activated it's sent to the exchange. When the order is close to the market price, the background color changes to yellow. A buy order is marked in blue, and a sell order is marked in red.

The right click menu in the Order folder provides possibility to activate, modify, view or delete an order, or insert a new order.

Trades

The folder displays all trades for the selected portfolio for <My Orders only>.

Accumulated Trades

The folder displays trades accumulated per instrument.

Portfolio

This folder shows your positions, including trading power, cash, instruments and the market price of your positions. There is a filter to show/not show instruments, cash and limits. In the top panel you will find a summary of your total investments. For some order entry providers, the top panel will also include information about cash, limits and portfolio status.

The Order Entry Window is the main window for entering, changing or amending orders and includes fields for entering price, volume, portfolio and other conditions.

The window can be accessed by:

- Double-click on the bid or ask column on a symbol in the Market Window or Composite Window
- Right-click on a symbol and select "Buy Order" or "Sell Order" in the Market Window or Composite Window
- Press + to Buy or - to sell on the keyboard when the symbol is active in any window
- Double-click on bid or ask in the Orderbook

#Orders	B Size	Bid	Ask	A Size	#Orders
2	2,498	5.051	5.056	4,663	2
3	3,940	5.050	5.057	9,005	4
3	4,626	5.049	5.058	12,540	5
3	7,500	5.048	5.059	7,042	3
2	2,978	5.047	5.060	10,657	6
4	13,042	5.046	5.061	2,500	2
4	7,745	5.045	5.062	10,904	7
2	2,892	5.043	5.063	10,043	1
1	1,730	5.042	5.064	2,010	1
2	4,679	5.041	5.065	2,451	1

Total Volume: 25 Client: SHARIA Asset Manager: SHARIA

Volume (100%): 25 Price (EUR): 0.000 Portfolio: SHARIA Broker: NEONET

Split Order (0 volume, 0% remaining)

Active BUY! SELL! Cancel Adv. ▾

5. Further Information

If you require further information or support about the UME X Trader platform please contact us on: support@shariaumex.com

Or contact us by phone:

UK: 0845 193 0142

International: +44 203 008 5715

Enquiries about:

being placed live on the system to access additional markets or place trades through executing brokers; or,

about becoming an agent to distribute UME X Trader should be addressed to Selvan Saha

selvan.saha@shariaumex.com